



# GILTRAP

ENGINEERED PERFORMANCE

## Construction Trailer

### Operation & Parts Manual



**NEW ZEALAND (HEAD OFFICE)**  
**GILTRAP ENGINEERING LTD**  
7 Main North Road  
PO Box 83  
Otorohanga

TEL: [+64 7 873 4199](tel:+6478734199)

FAX: [+64 7 873 8131](tel:+6478738131)

FREE: [0800 804 458 \(NZ ONLY\)](tel:0800804458)

GENERAL: [info@giltrapag.co.nz](mailto:info@giltrapag.co.nz)

PARTS: [parts@giltrapag.co.nz](mailto:parts@giltrapag.co.nz)

WEBSITE: [www.giltrapag.co.nz](http://www.giltrapag.co.nz)

**AUSTRALIA**  
**GILTRAP AG EQUIPMENT PTY LTD**  
105-117 Boundary Road  
Laverton North  
Melbourne  
Vic 3026

TEL: [+61 3 936 96 548](tel:+61393696548)

FAX: [+61 3 936 96 549](tel:+61393696549)

FREE: [1800 127 030 \(AU ONLY\)](tel:1800127030)

SALES: [sales@giltrapag.com.au](mailto:sales@giltrapag.com.au)

PARTS: [melboffice@giltrapag.com.au](mailto:melboffice@giltrapag.com.au)

WEBSITE: [www.giltrapag.com.au](http://www.giltrapag.com.au)

**Part Number: 13008**

## **Disclaimer**

While every attempt has been made to ensure that information and diagrams in this manual are correct, Giltrap Engineering Limited will not be responsible for any damage or consequential loss arising out of misinterpretation or failure to follow recommended procedures; nor will it be liable for any damage caused by or arising out of modification or misuse of its product.

For parts or service enquiries, please use the applicable contacts on the previous page.

Printed January 2020

Copyright © 2021 by Giltrap Engineering Ltd.  
Printed in New Zealand

All rights reserved. Reproduction or use, without express permission, of editorial or pictorial content, in any manner, is prohibited.

---

---

## Table of Contents

|  |    |
|--|----|
| Disclaimer .....                       | 2  |
| Table of Contents .....                | 3  |
| Introduction .....                     | 4  |
| Warranty .....                         | 5  |
| Serial Number Identification.....      | 6  |
| General Safety.....                    | 7  |
| Pre-Service Guidelines & Settings..... | 10 |
| Greasing & Lubrication .....           | 11 |
| Installation .....                     | 13 |
| Operation.....                         | 13 |
| Hydraulic Requirements .....           | 13 |
| Parts Section .....                    | 14 |

---

## Introduction

Thank you for purchasing a Giltrap product. *Giltrap Engineering Ltd* has enjoyed a long-standing success with their machinery. We would like you to enjoy the benefits of owning a Giltrap too. By following the guidelines laid out in this book, you will ensure trouble free, low maintenance operating for years.

*Giltrap Engineering Ltd* is a progressive company which continually strives to satisfy your needs, so we welcome any feedback which you can provide to help us improve our products and services and to ensure that they perform to your expectations. Any constructive comments about this operator's manual are also welcome.

Your machine has been designed to perform its task efficiently and with a minimum of maintenance. This handbook provides safety guidelines, instructions, maintenance requirements and parts listings. We recommend that you read the entire handbook, before operating the machine as this will enable you to take full advantage of your new machine's considerable potential.

## Manual Evaluation

We update our operating manuals regularly. Your suggestions for improvement help us to create even more user friendly manuals. Send your suggestions by email to [admin@giltrapag.co.nz](mailto:admin@giltrapag.co.nz).

## Delivery and Warranty

Before you begin to use your machine, please check it to make sure there is no delivery damage. If damage is evident, contact the dealer who supplied the machine so that they can make the appropriate claims.

If you have any other queries, please contact your dealer or *Giltrap Engineering Ltd* (0800 80 GILTRAP).

All Giltrap products are covered by a 24-month warranty on parts and labour, subject to normal use.

**Please fill in the details below for future reference.**

Model:

Serial No:

Delivery Date:

Dealer:

## Warranty

The Goods specified in the Price List as designed and supplied by Giltrap Engineering Ltd are warranted against faulty workmanship and defective materials for a period of 24 months from the date of purchase. In addition to the primary 24 month warranty for Giltrap products, there is a further 12 month structural warranty for the goods, against faulty workmanship and/or defective materials for structural items only. The structural warranty does not apply to electronics or component parts.

Such warranty is subject to the following conditions:

1. This warranty covers the repair or replacement of parts or machinery sold by the manufacturer and damaged as a result of the faulty workmanship or materials in such parts or machinery. It does not extend to any other loss or damage including consequential loss or damage or loss to other property or persons.
2. Without limiting the generality of paragraph 1 above, this warranty does not cover the following:
  - (a) Travel expenses.
  - (b) Damaged caused by accident, misuse or abuse.
  - (c) Damage to any goods which have been altered or modified by someone other than the manufacturer or its authorised agent.
  - (d) Damage or loss to the goods due to their unsuitability for any particular use or for using with any particular tractor except where such use or tractor had been specifically approved by the manufacturer.
  - (e) Damage or loss where the fitting and installation of the goods were not carried out by the manufacturer or its authorised dealer.
3. Procedure for recovery under warranty.  
No loss or damage will be covered by this warranty unless the loss or damage is reported immediately to the dealer (who will contact the distributor who will advise whether it is covered by the warranty and undertake the necessary action).

No warranty repair work is to be undertaken prior to an order number being obtained.

This warranty shall be interpreted according to the laws of New Zealand and the parties agree to submit to the jurisdiction of the Courts of New Zealand.

## Warranty Claims

If you wish to make a claim under warranty:

- Immediately stop using the machine.
- List details of the machine and damaged item including serial numbers and date of purchase.
- Consult with your Giltrap dealer (supplier) and have him forward your claim and the damaged item to Giltrap Engineering Ltd.

No warranty to be undertaken unless an order number is obtained from the Seller (Giltrap Engineering Ltd) prior to any work being done.

## Serial Number Identification

Before ordering any parts, check the serial number and the delivery date of the machine and include this information with all orders.

If the Serial Number Plate is missing, the serial number will be stamped on the front of the drawbar.



Tel +64 7 873 4199  
www.giltrapag.co.nz  
7 Main North Road  
Otorohanga  
New Zealand

DRAWBAR VERTICAL RATING (kg):

GROSS LADEN MASS (kg):

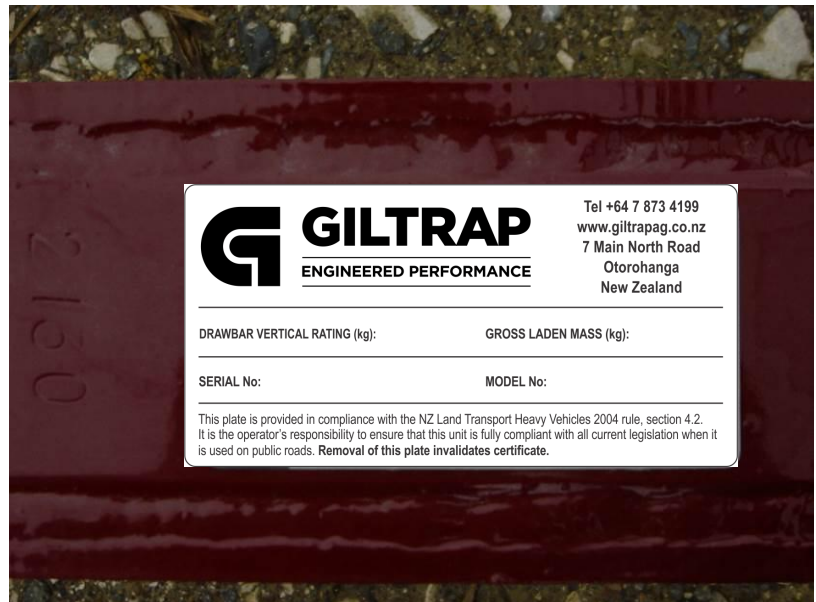
SERIAL No:

MODEL No:

This plate is provided in compliance with the NZ Land Transport Heavy Vehicles 2004 rule, section 4.2. It is the operator's responsibility to ensure that this unit is fully compliant with all current legislation when it is used on public roads. **Removal of this plate invalidates certificate.**



Serial number stamped onto chassis here



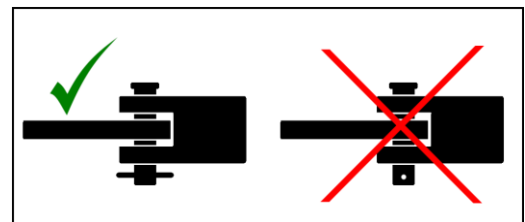
## General Safety

For the safety of others and yourself, please read and follow the precautions in this operator's manual. Pay particular attention to the following safety aspects of operating machinery.

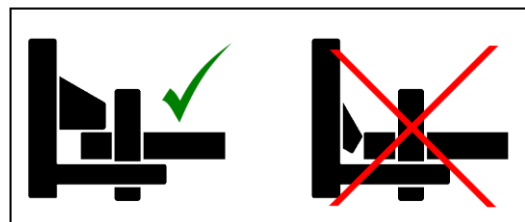
Do not ride on or allow passengers on the machine.



Always use a recognised hitch pin with a safety clip to hook trailed implements on behind the tractor.



Always ensure when using a quick hitch that the locking tab has come out and is in the locked position before moving.



Do Not operate tractor – trailer combination outside of manufacturers recommended drawbar loading.

Carry a suitable fire extinguisher.

A fire can ignite under certain conditions, so please take the following precautions:

After running your machine for a short time, check for defective bearings. A faulty bearing can become very hot, eventually discolouring, requiring immediate replacement.

Do not allow combustible material to accumulate inside guards or around rollers and other moving parts.

If your machine becomes blocked, stop immediately and remove the obstruction.

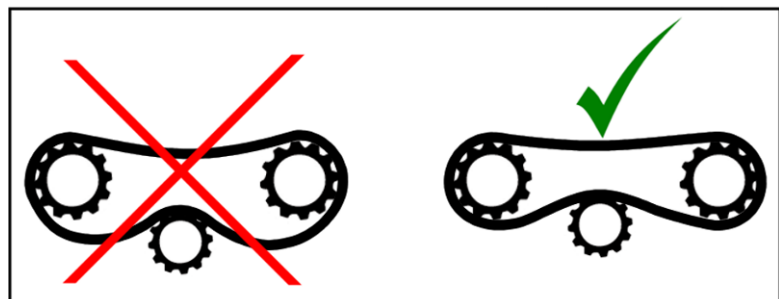
Be careful when operating in hot or dry conditions or on extreme fire risk days.



Never operate your machine without the safety guards in place.



All chains should be properly adjusted and replaced when necessary.





Release all hydraulic pressure from implements before commencing service work. Never look for suspected oil leaks with your hands or body - use a piece of cardboard instead. Any fluid that penetrates the skin will have to be removed immediately by a medical expert. Seek specialist advice on this type of injury.



Never attempt to unblock equipment while it is still operating. Always disengage power take-off, hydraulics and shut down engine before removing materials, checking or servicing. Failure to follow these precautions is likely to result in serious injury.



Wear proper protective clothing. Loose attire can easily be snagged by rotating machinery resulting in serious injury or death.



## Pre-Service Guidelines & Settings

Prior to delivering your machine, your dealer should have completed a pre-delivery check.

It is required to check the following points before using the machine for the first time.

- CHECK ALL WHEEL NUTS ARE SUFFICIENTLY TIGHT.

### Wheel Nut Recommended Torque Settings

|          |                     |
|----------|---------------------|
| M18 Stud | 200 ft/lbs or 270Nm |
| M20 Stud | 280 ft/lbs or 380Nm |
| M22 Stud | 330 ft/lbs or 450Nm |



- CHECK ALL TYRE PRESSURES ARE CORRECT.

### Recommended Tyre Pressures

|              |       |         |
|--------------|-------|---------|
| 11.5/80-15.3 | 58psi | 4.0 bar |
| 400/60-15.5  | 50psi | 3.5 bar |
| 15.0/70-18   | 45psi | 3.1 bar |
| 400/55-22.5  | 46psi | 3.2 bar |
| 500/45-22.5  | 35psi | 2.4 bar |
| 500/60-22.5  | 35psi | 2.4 bar |
| 560/45R22.5  | 58psi | 4.0 bar |
| 560/60R22.5  | 58psi | 4.0 bar |
| 650/55R26.5  | 58psi | 4.0 bar |



- CHECK ALL AXLE MOUNTING BOLTS AND NUTS ARE SUFFICIENTLY TIGHT.

### Axle Mounting Bolt Recommended Torque Settings

|     |                     |
|-----|---------------------|
| M16 | 180 ft/lbs or 245Nm |
| M20 | 355 ft/lbs or 480Nm |



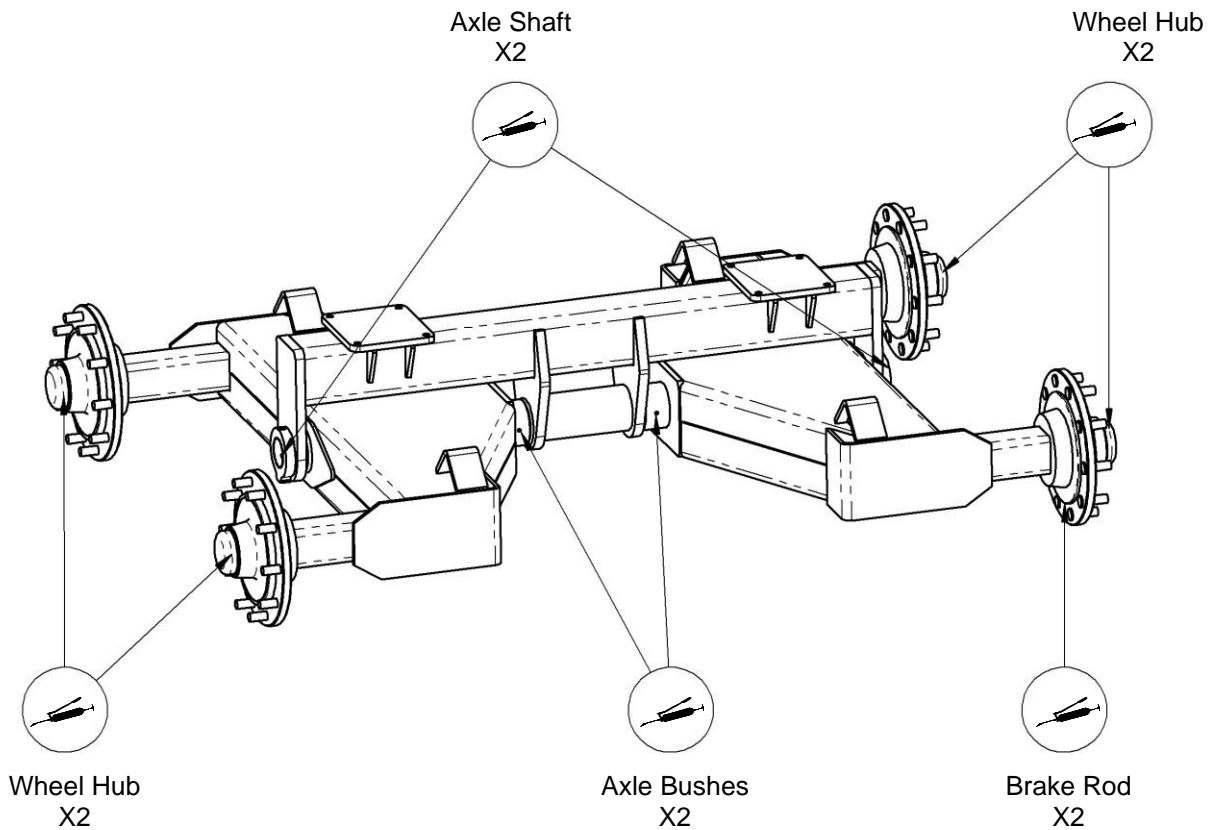
- THERE ARE SEVERAL GREASE POINTS on all Giltrap trailers. Check the yellow label on the side of your machine to see how many grease points there are. You should fully grease everything before running it for the first time. See page 11-13 for greasing and lubrication details.
- CHECK AND RETIGHTEN WHEEL NUTS AFTER:
  - First use
  - First laden journey
  - The first 50 hours and every 50 hours thereafter

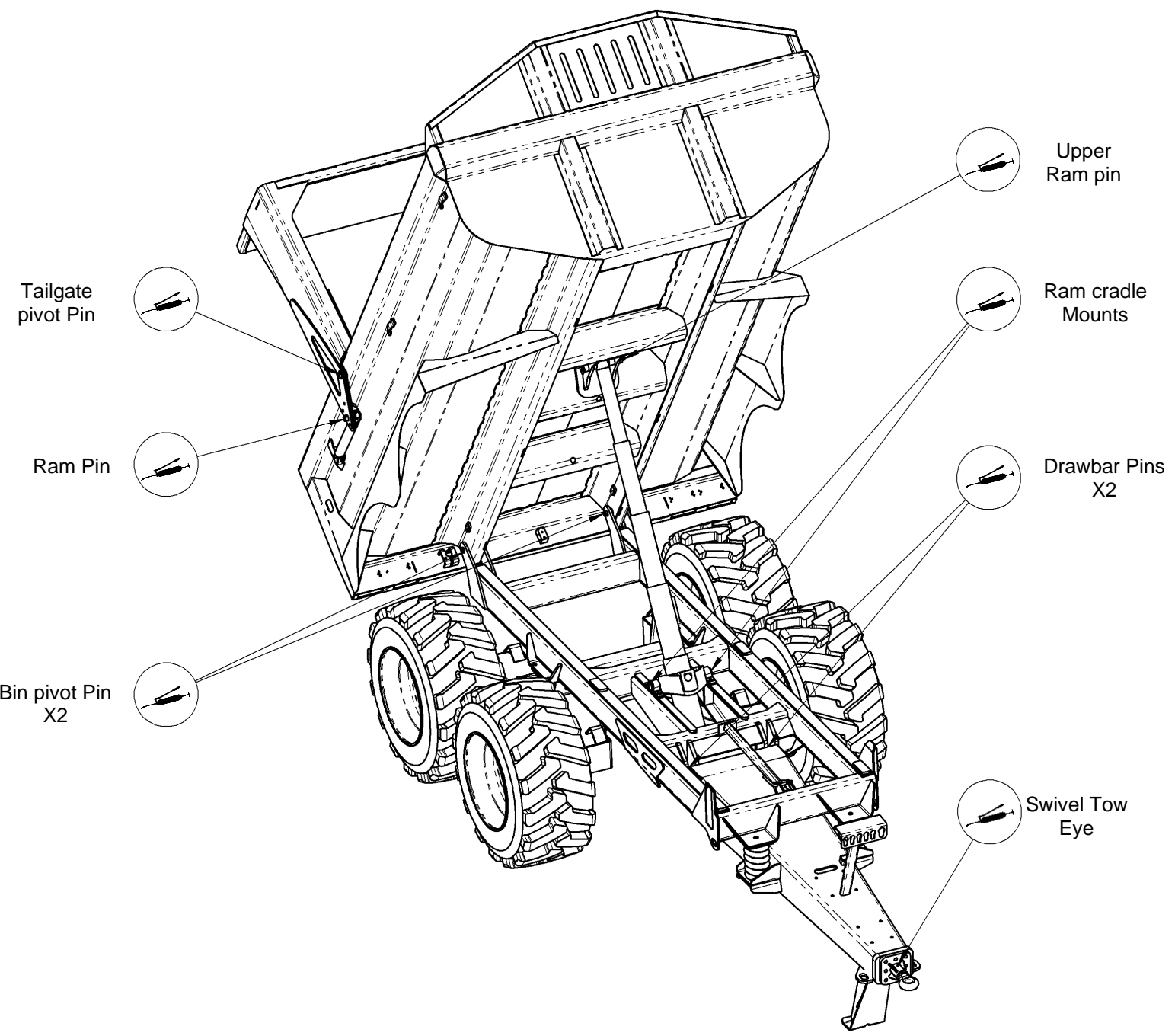
## Greasing & Lubrication

### Oil & Grease

Grease Grade Recommended  
NLGI 2 oil based

| Greasing & Lubrication Schedule |                           |
|---------------------------------|---------------------------|
| <b>Axle Bushes</b>              | – Grease every second day |
| <b>Tailgate Pivot Pin</b>       | – Grease weekly           |
| <b>Lift Ram Pivot</b>           | – Grease weekly           |
| <b>Ram Cradle Mounts</b>        | – Grease weekly           |
| <b>Lift Ram Top Pin</b>         | – Grease weekly           |
| <b>Deck pivot Pin</b>           | – Grease weekly           |
| <b>Drawbar Pins</b>             | – Grease weekly           |
| <b>Swivel Tow Eye</b>           | – Grease monthly          |
| <b>Wheel Hubs</b>               | – Grease every 3 months   |
| <b>Brake Rod</b>                | – Grease every 3 months   |





Check the tyres regularly for correct pressure and check all bolts etc. for tightness

## Installation

Connect the trailer to the tractor drawbar. Ensure that the tractor drawbar is the correct height so the trailer deck is close to horizontal.

Check that there are no hydraulic leaks in the hoses and fittings.

Check operation of brakes and ensure they are correctly adjusted.

Be aware of hazards and dangers before operating the equipment.

Be sure that the tractor is the correct size in relation to the trailer.

## Operation

Do Not operate tractor – trailer combination outside of manufacturers recommended drawbar loading.

Ensure jack is raised before moving off

Fill trailer evenly where possible

When tipping, raise tailgate before lifting deck

Lift main deck. Easing forward as the load empties will speed up the process.

Lower the tailgate. Do not leave the tailgate in 'float.'

## Hydraulic Requirements

| Model | Lift ram capacity |
|-------|-------------------|
| CS17  | 22.2L             |
| CS20  | 22.2L             |
| CS22  | 29.7L             |

## Parts Section

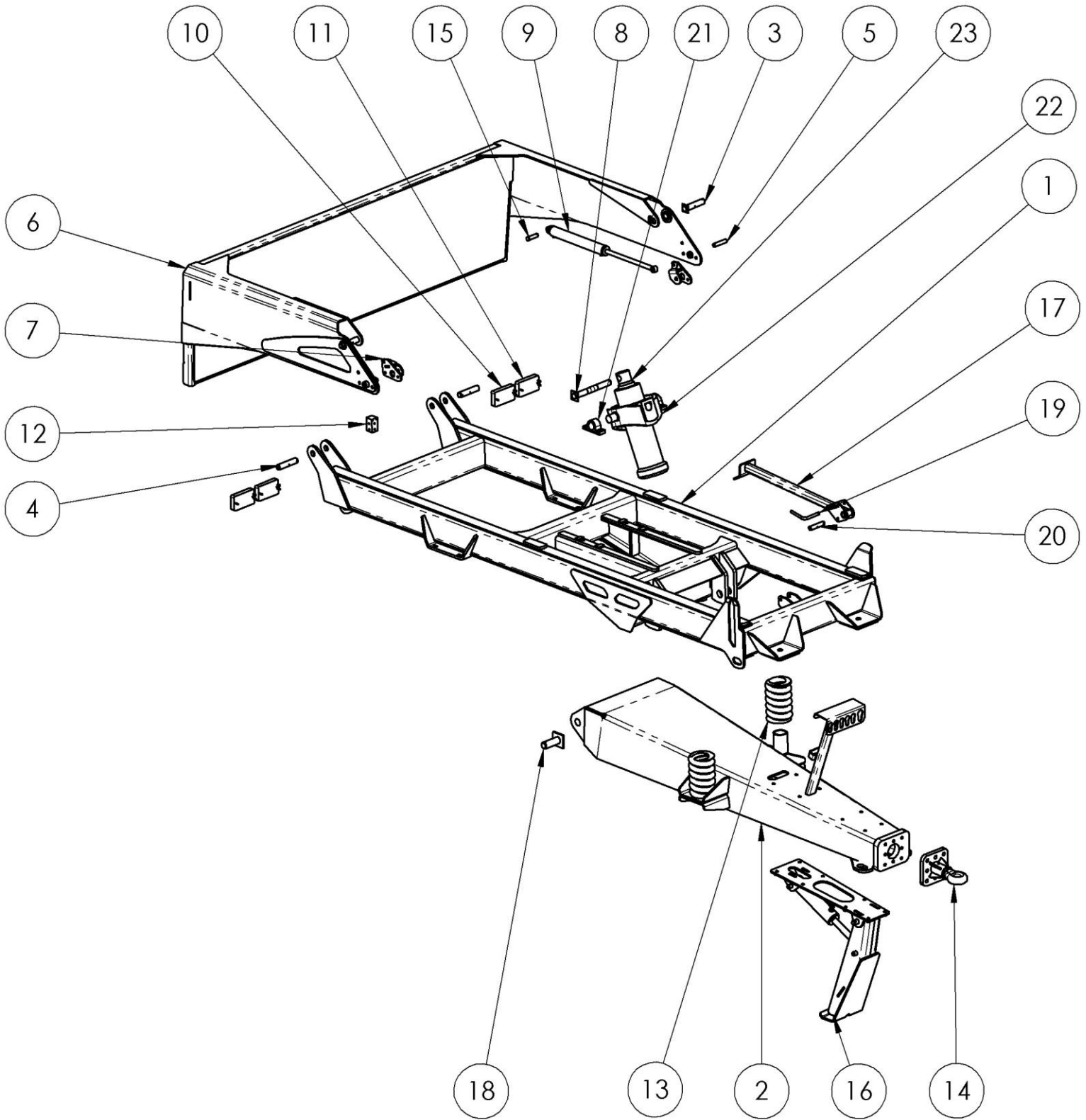


|   |    |
|---|----|
| Parts Section .....                             | 14 |
| TRANSFERS & DECALS .....                        | 15 |
| CS17 ASSEMBLY .....                             | 16 |
| CS20 ASSEMBLY .....                             | 18 |
| CS22 ASSEMBLY .....                             | 20 |
| CS17 AND CS20 AXLE ASSEMBLY .....               | 22 |
| CS22 AXLE ASSEMBLY .....                        | 23 |
| JACK ASSEMBLY .....                             | 24 |
| ADR 21.5T SPRUNG BOGIE .....                    | 25 |
| <i>ADR 130mm Axle Brake Configuration</i> ..... | 26 |
| <i>ARD 1360 8 Leaf Bogie</i> .....              | 27 |
| <i>ARD 1500 9 Leaf Bogie</i> .....              | 28 |
| <i>ARD Steering Axle Assembly</i> .....         | 29 |
| <i>Steering Axle parts list</i> .....           | 30 |
| <i>ADR 100mm</i> .....                          | 32 |

## Transfers & Decals

| ITEM NO. | PART NUMBER | DESCRIPTION           | CS17 | CS20 | CS22 |
|----------|-------------|-----------------------|------|------|------|
| 1        | 995-3045    | Big G                 | 3    | 3    | 3    |
| 2        | 995-1228    | Ensure jack is in...  | 1    | 1    | 1    |
| 3        | 995-1205    | Crushing Hazard       | 1    | 1    | 1    |
| 4        | 995-1225    | Do not reach under... | 1    | 1    | 1    |
| 5.1      | 995-3035    | CONSTRUCTION 17       | 2    | 0    | 0    |
| 5.2      | 995-3040    | CONSTRUCTION 20       | 0    | 2    | 0    |
| 5.3      | 995-3042    | CONSTRUCTION 22       | 0    | 0    | 2    |
| 6        |             | HARDOX Sticker        | 2    | 2    | 2    |

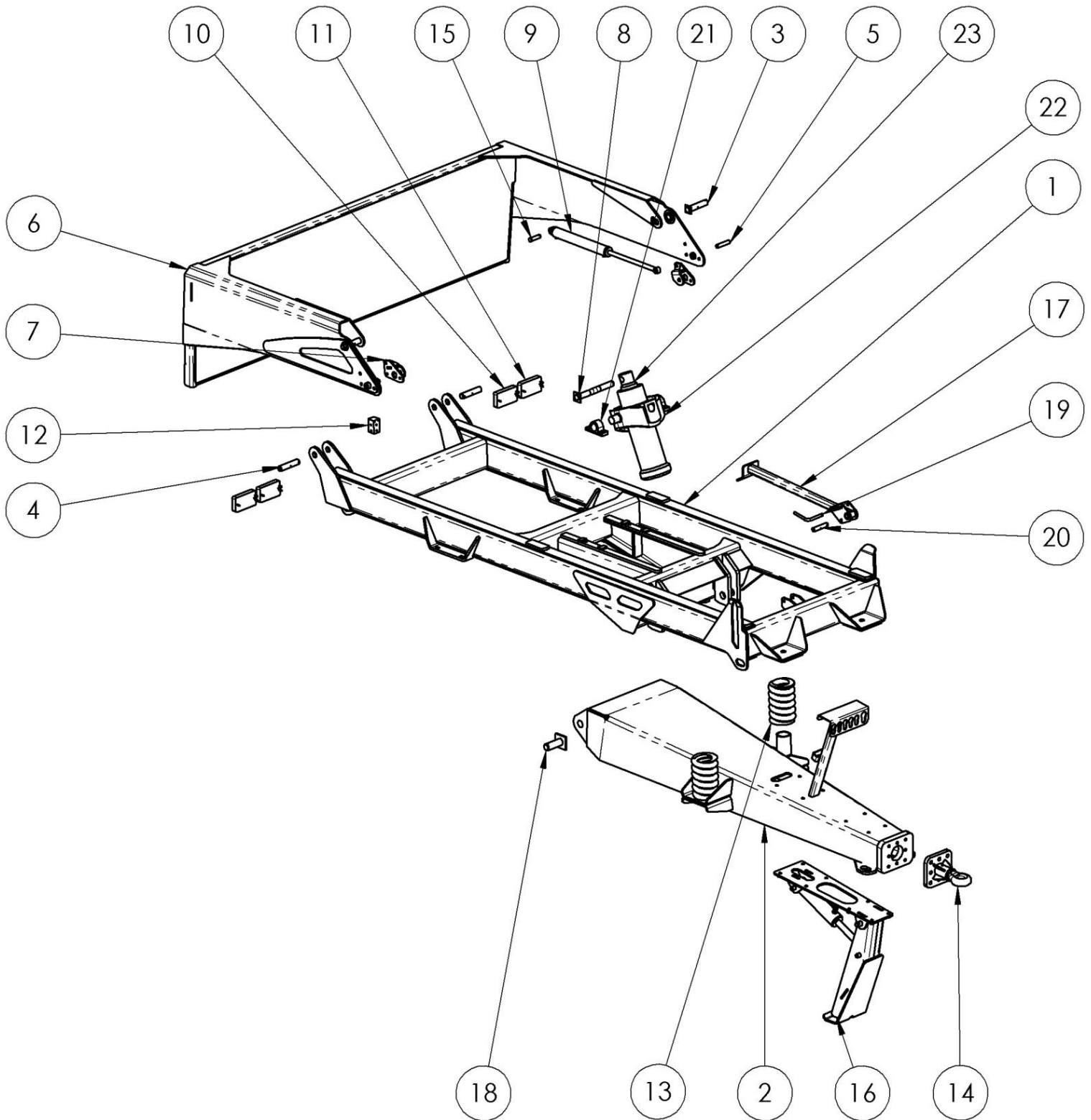
### CS17 Assembly





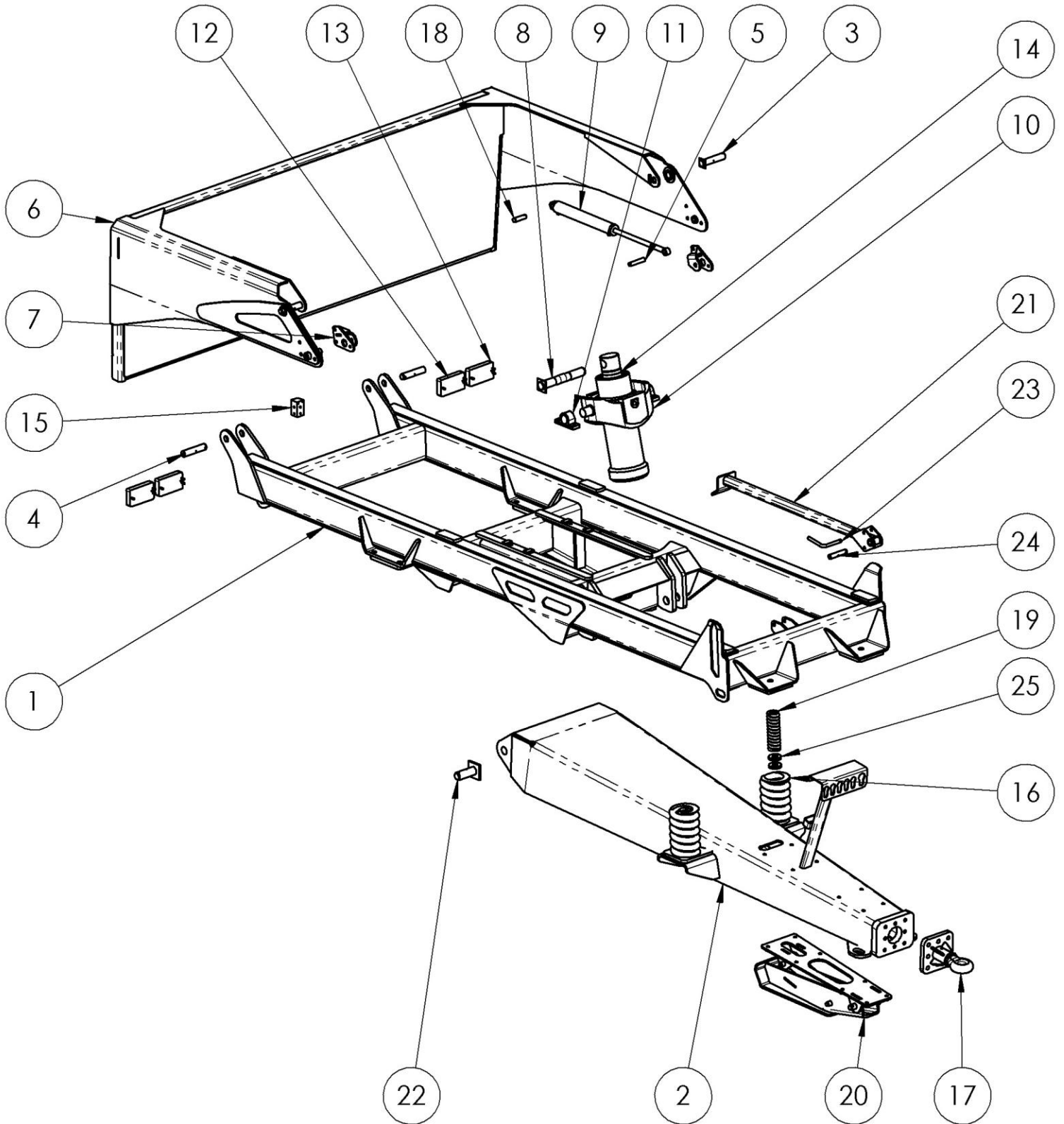
| ITEM NO.  | PART NUMBER                    | DESCRIPTION                  | QTY      |
|-----------|--------------------------------|------------------------------|----------|
| 1         | 12343 CS17 Chassis welded assy | CS17 Chassis welded assembly | 1        |
| 2         | 12377 CS17 Drawbar welded assy | drawbar                      | 1        |
| 3         | 12005 Tailgate pivot pin       | pin                          | 2        |
| 4         | 900-0255                       | PIN Ø35 x 145                | 2        |
| 5         | 12787 Ram pin                  | PIN Ø22.00 x 95.75           | 2        |
| 6         | 12345 Tailgate welded assy     | tailgate                     | 1        |
| 7         | 12789 Ram mount assy           | ram mount assy               | 2        |
| 8         | 12347                          | top ram pin                  | 1        |
| 9         | compact2x1x16                  | Ram 2" bore x 14" stroke     | 2        |
| 10        | Hella 2330 Stop lamp           |                              | 2        |
| 11        | Hella 2151 Indicator lamp      |                              | 2        |
| 12        | HCV3383A Junction block        |                              | 1        |
| 13        | SGC260X168                     |                              | 2        |
| 14        | 10822 Tow eye welded assy      | Tow eye assembly             | 1        |
| 15        | 10835-22                       | PIN Ø22.00x80.00             | 2        |
| 16        | 10823 Jack assy                | hydraulic jack               | 1        |
| 17        | 10821 Stay assy                |                              | 1        |
| 18        | 900-0290                       | PIN Ø45 x 106                | 2        |
| 19        | 301-4200                       | JACK MODEL 4 - SLEEVE PIN    | 1        |
| 20        | 900-0220                       | PIN 25mm T20-5/23-06 PIVOT   | 1        |
| 21        | 50mmTipo-1                     | TRUNNION MOUNT               | 2        |
| 22        | Ram cradle CULLA 5             | RAM CRADLE                   | 1        |
| 23        | 4047F 4S 20T Ram assy          |                              | 1        |
| <b>24</b> |                                | <b>Seal kit</b>              | <b>1</b> |

### CS20 Assembly



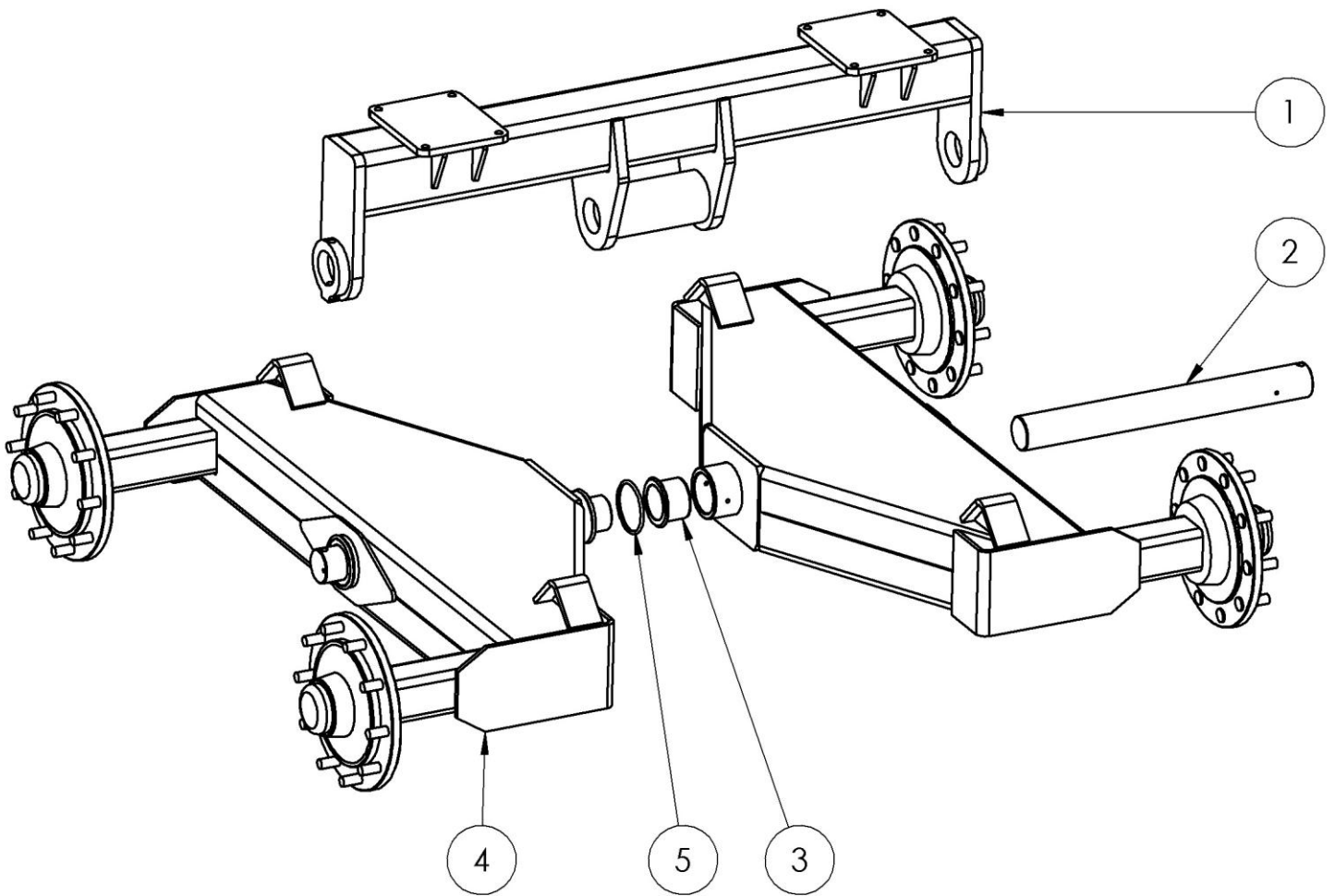
| ITEM NO.  | PART NUMBER                    | DESCRIPTION                  | QTY      |
|-----------|--------------------------------|------------------------------|----------|
| 1         | 12382 CS20 Chassis welded assy | CS20 Chassis welded assembly | 1        |
| 2         | 12384 CS20 Drawbar welded assy | drawbar                      | 1        |
| 3         | 12005 Tailgate pivot pin       | pin                          | 2        |
| 4         | 900-0255                       | PIN Ø35 x 145                | 2        |
| 5         | 12787 Ram pin                  | PIN Ø22.00 x 95.75           | 2        |
| 6         | 12385 Tailgate welded assy     | tailgate                     | 1        |
| 7         | 12789 Ram mount assy           | ram mount assy               | 2        |
| 8         | 12347                          | top ram pin                  | 1        |
| 9         | compact2x1x16                  | Ram 2" bore x 14" stroke     | 2        |
| 10        | Hella 2330 Stop lamp           |                              | 2        |
| 11        | Hella 2151 Indicator lamp      |                              | 2        |
| 12        | HCV3383A Junction block        |                              | 1        |
| 13        | SGC260X168                     |                              | 2        |
| 14        | 10822 Tow eye welded assy      | Tow eye assembly             | 1        |
| 15        | 10835-22                       | PIN Ø22.00x80.00             | 2        |
| 16        | 10823 Jack assy                | hydraulic jack               | 1        |
| 17        | 10821 Stay assy                |                              | 1        |
| 18        | 900-0290                       | PIN Ø45 x 106                | 2        |
| 19        | 301-4200                       | JACK MODEL 4 - SLEEVE PIN    | 1        |
| 20        | 900-0220                       | PIN 25mm T20-5/23-06 PIVOT   | 1        |
| 21        | 50mmTipo-1                     | TRUNNION MOUNT               | 2        |
| 22        | Ram cradle CULLA 5             | RAM CRADLE                   | 1        |
| 23        | 4047F 4S 20T Ram assy          |                              | 1        |
| <b>24</b> |                                | <b>Seal kit</b>              | <b>1</b> |

### CS22 Assembly



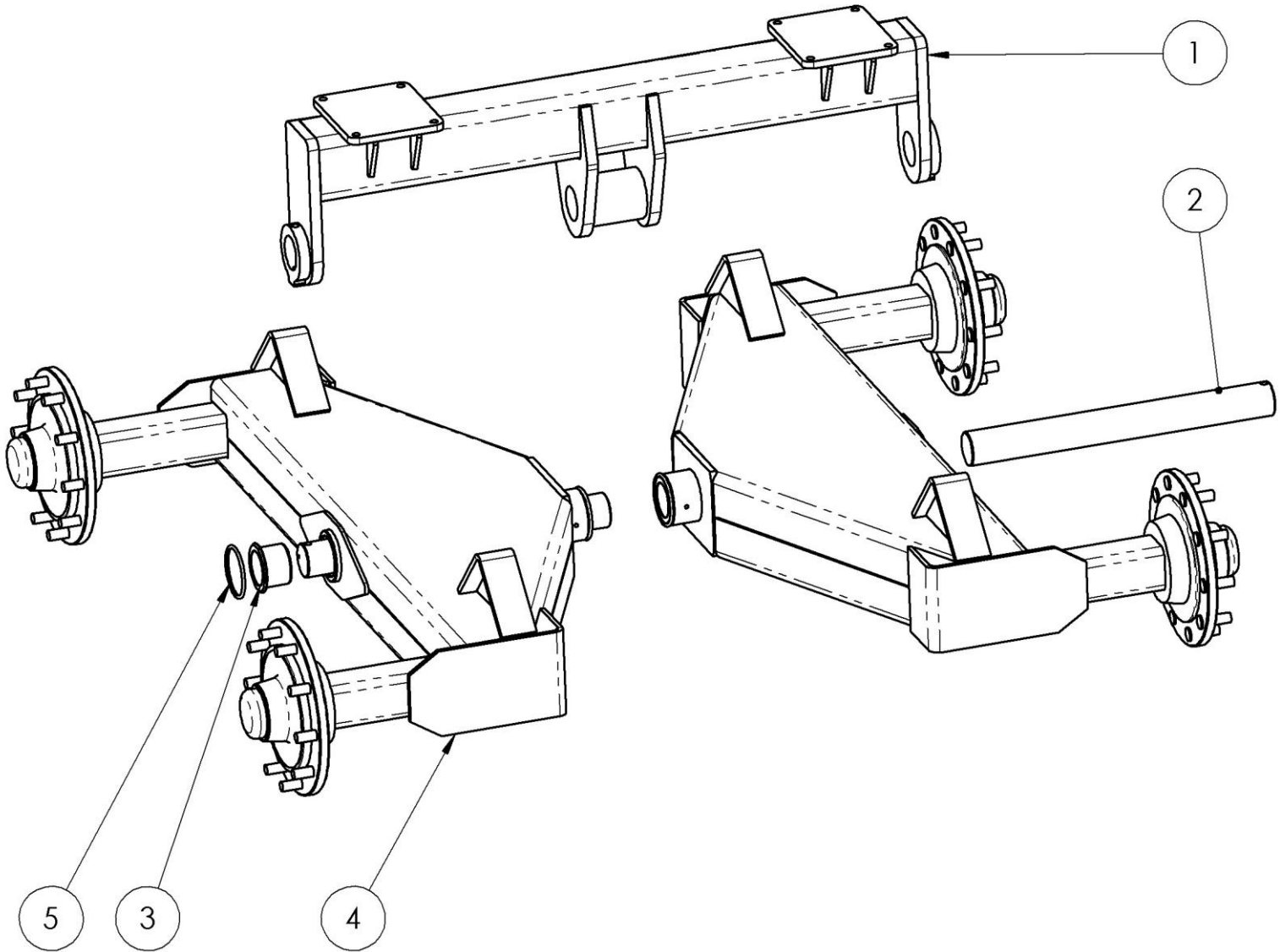
| ITEM NO.  | PART NUMBER                    | DESCRIPTION                  | QTY      |
|-----------|--------------------------------|------------------------------|----------|
| 1         | 12234 CS22 Chassis welded assy | CS22 Chassis welded assembly | 1        |
| 2         | 12378 CS22 Drawbar welded assy | CS22 Drawbar weldment        | 1        |
| 3         | 12005 Tailgate pivot pin       | pin                          | 2        |
| 4         | 900-0255                       | PIN Ø35 x 145                | 2        |
| 5         | 12787 Ram pin                  | PIN Ø22.00 x 95.75           | 2        |
| 6         | 12238 Tailgate welded assy     | tailgate                     | 1        |
| 7         | 12789 Ram mount assy           | ram mount assy               | 2        |
| 8         | 12239                          | top ram pin                  | 1        |
| 9         | compact2x1x16                  | Ram 2" bore x 14" stroke     | 2        |
| 10        | Ram cradle CULLA 6             | RAM CRADLE CULLA 6           | 1        |
| 11        | 50mmTipo-1                     | TRUNNION MOUNT               | 2        |
| 12        | Hella 2330 Stop lamp           |                              | 2        |
| 13        | Hella 2151 Indicator lamp      |                              | 2        |
| 14        | 4048F 4S 25T Ram               |                              | 1        |
| 15        | HCV3383A Junction block        |                              | 1        |
| 16        | SGC260X168                     |                              | 2        |
| 17        | 10822 Tow eye welded assy      | Tow eye assembly             | 1        |
| 18        | 10835-22                       | PIN Ø22.00x80.00             | 2        |
| 19        | SGC230X70                      | 230 x 70 COIL                | 2        |
| 20        | 10823 Jack assy                | hydraulic jack               | 1        |
| 21        | 10821 Stay assy                |                              | 1        |
| 22        | 900-0290                       | PIN Ø45 x 106                | 2        |
| 23        | 301-4200                       | JACK MODEL 4 - SLEEVE PIN    | 1        |
| 24        | 900-0220                       | PIN 25mm T20-5/23-06 PIVOT   | 1        |
| 25        | 12379                          | spring spacer                | 4        |
| <b>26</b> |                                | <b>Seal kit</b>              | <b>1</b> |

### CS17 and CS20 Axle Assembly



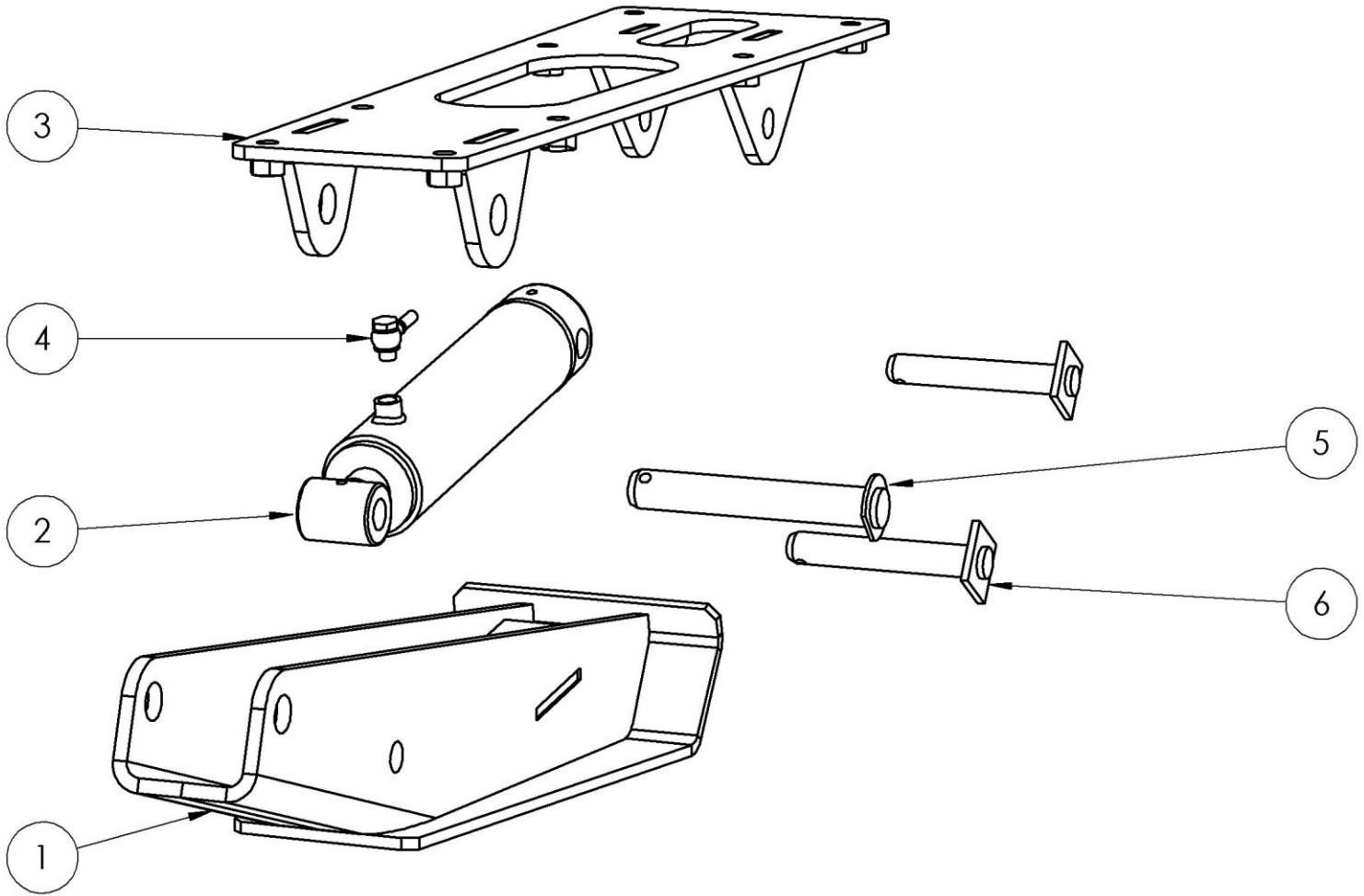
| ITEM NO. | PART NUMBER             | DESCRIPTION                | QTY |
|----------|-------------------------|----------------------------|-----|
| 1        | 10828 Axle beam assy    | Heavy Duty axle cross beam | 1   |
| 2        | 50390 HD axle shaft     | SHAFT Ø76.2x700            | 2   |
| 3        | C28176-3 HD axle bush   | BUSH Ø76x66                | 4   |
| 4        | 10827 Walking beam assy | WALKING BEAM ASSEMBLY      | 2   |
| 5        | Oring Dust excluder     | SEAL MR105x7               | 4   |

### CS22 Axle Assembly



| ITEM NO. | PART NUMBER             | DESCRIPTION                | QTY |
|----------|-------------------------|----------------------------|-----|
| 1        | 10828 Axle beam assy    | Heavy Duty axle cross beam | 1   |
| 2        | 50390 HD axle shaft     | SHAFT Ø76.2x700            | 2   |
| 3        | C28176-3 HD axle bush   | BUSH Ø76x66                | 4   |
| 4        | 11151 Walking beam assy |                            | 2   |
| 5        | Oring Dust excluder     | SEAL MR105x7               | 4   |

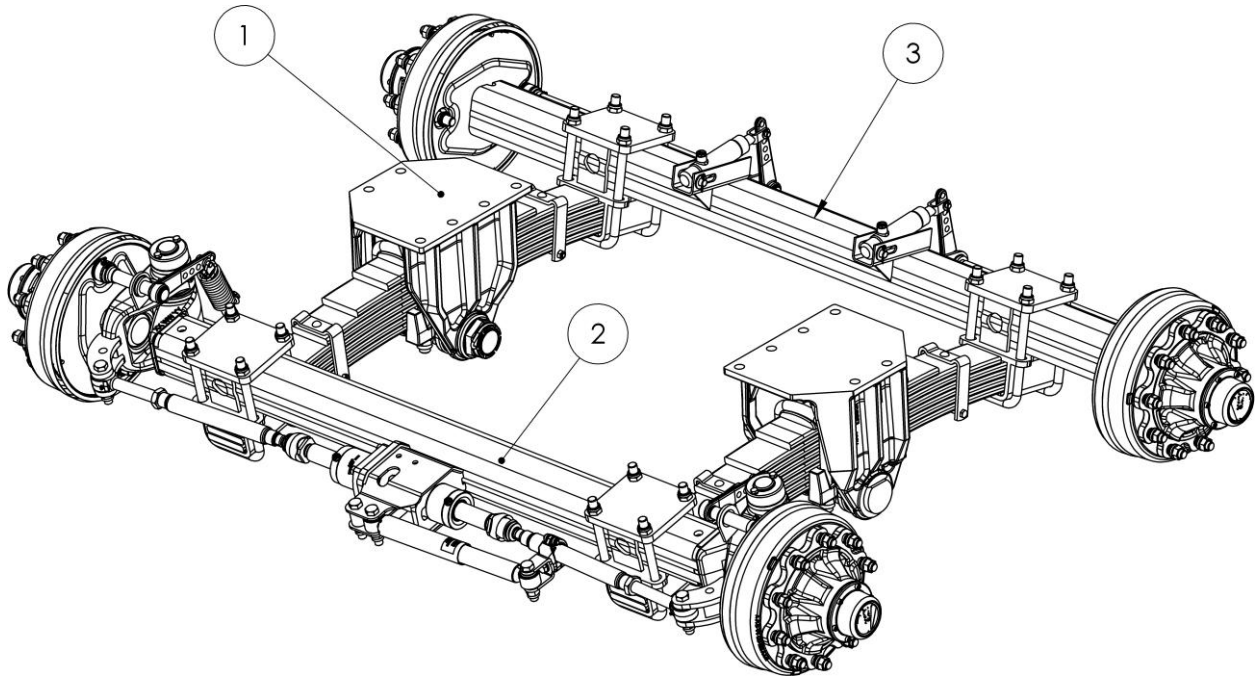
## Jack Assembly



| ITEM NO. | PART NUMBER           | DESCRIPTION                                    | QTY |
|----------|-----------------------|--|-----|
| 1        | 10824 Jack foot assy  |  | 1   |
| 2        | 10825 Jack ram assy   | CROWD CYLINDER 1.5" X 3" X 245                 | 1   |
| 3        | 10826 Jack mount assy |  | 1   |
| 4        | 3-8 Banjo stack       |  | 1   |
| 5        | 50099 top ram pin     |  | 1   |
| 6        | 900-0234              | PIN 25mm 2-6T/T20-T37 LOWER RAM MOUNT c/w HEAD | 2   |

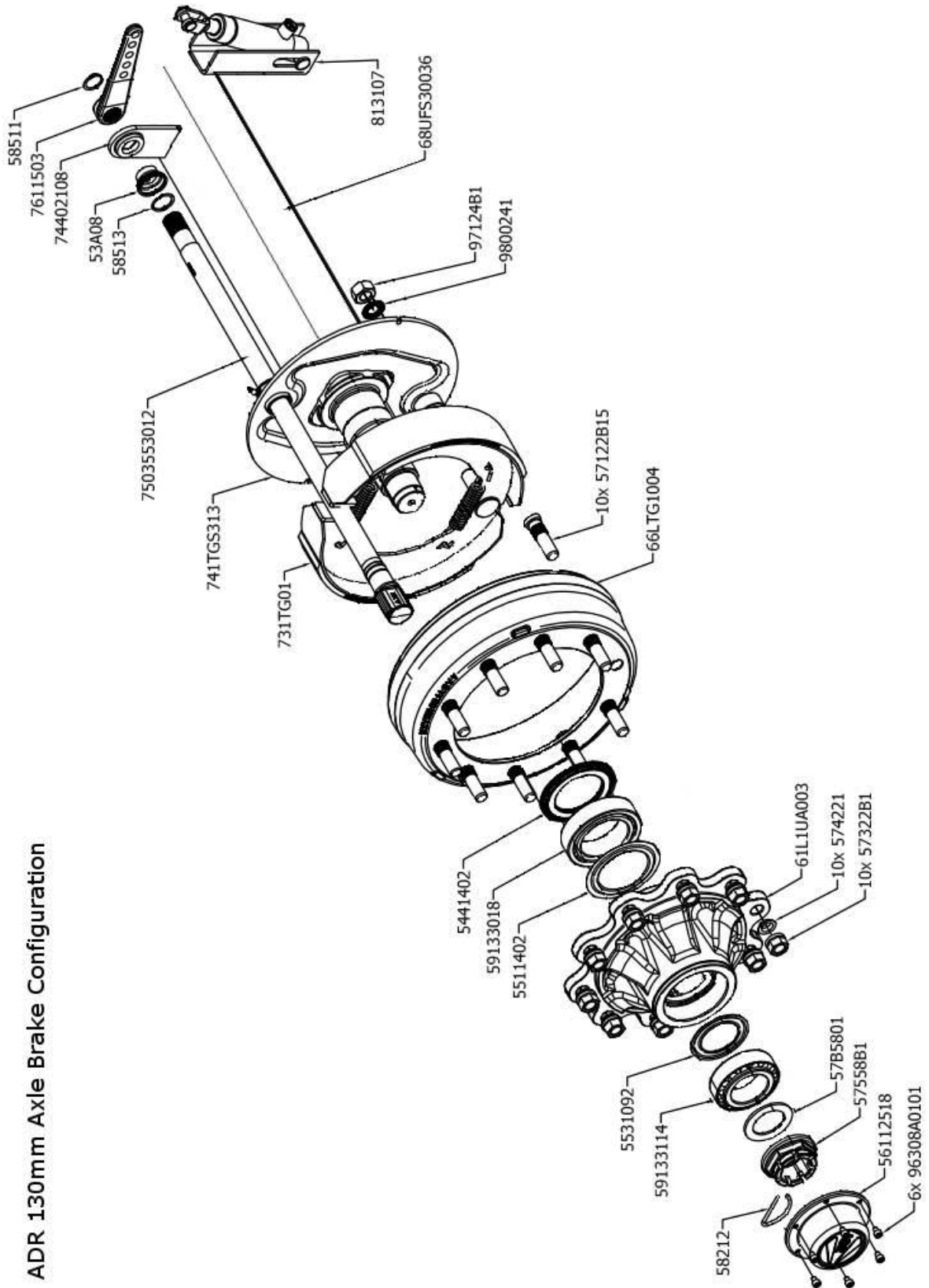


## ADR 21.5T Sprung Bogie



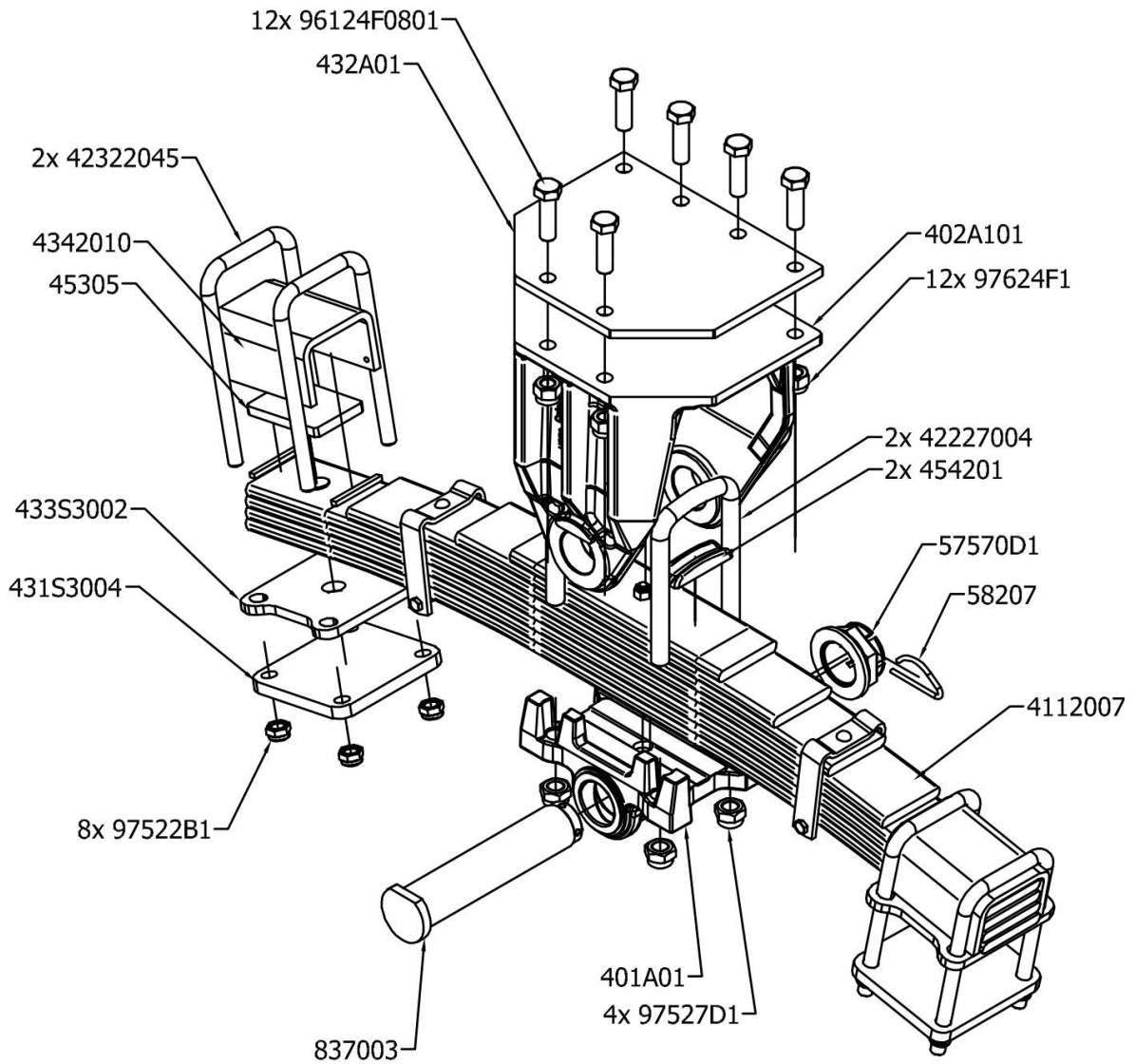
| Item | Part Number  | Description   | Qty |
|------|--------------|---|-----|
| 1    | SPA21.5T-4/1 | 21.5t Bogie Axle Springs(Set)8 Leaves (1360mm Axle Centres) | 2   |
| 1    | SPA21.5T-4   | 21.5T BOGIE AXLE SPRINGS(SET)9 LEAVES (1500mm Axle Centres) | 2   |
| 2    | SPA21.5T-5   | 21.5t 130mm Plain Axle/Hyd Brakes                           | -   |
| 3    | SPA21.5T-6   | 21.5t 130mm S/Steering Axle/Hyd Brakes                      | -   |

### ADR 130mm Axle Brake Configuration

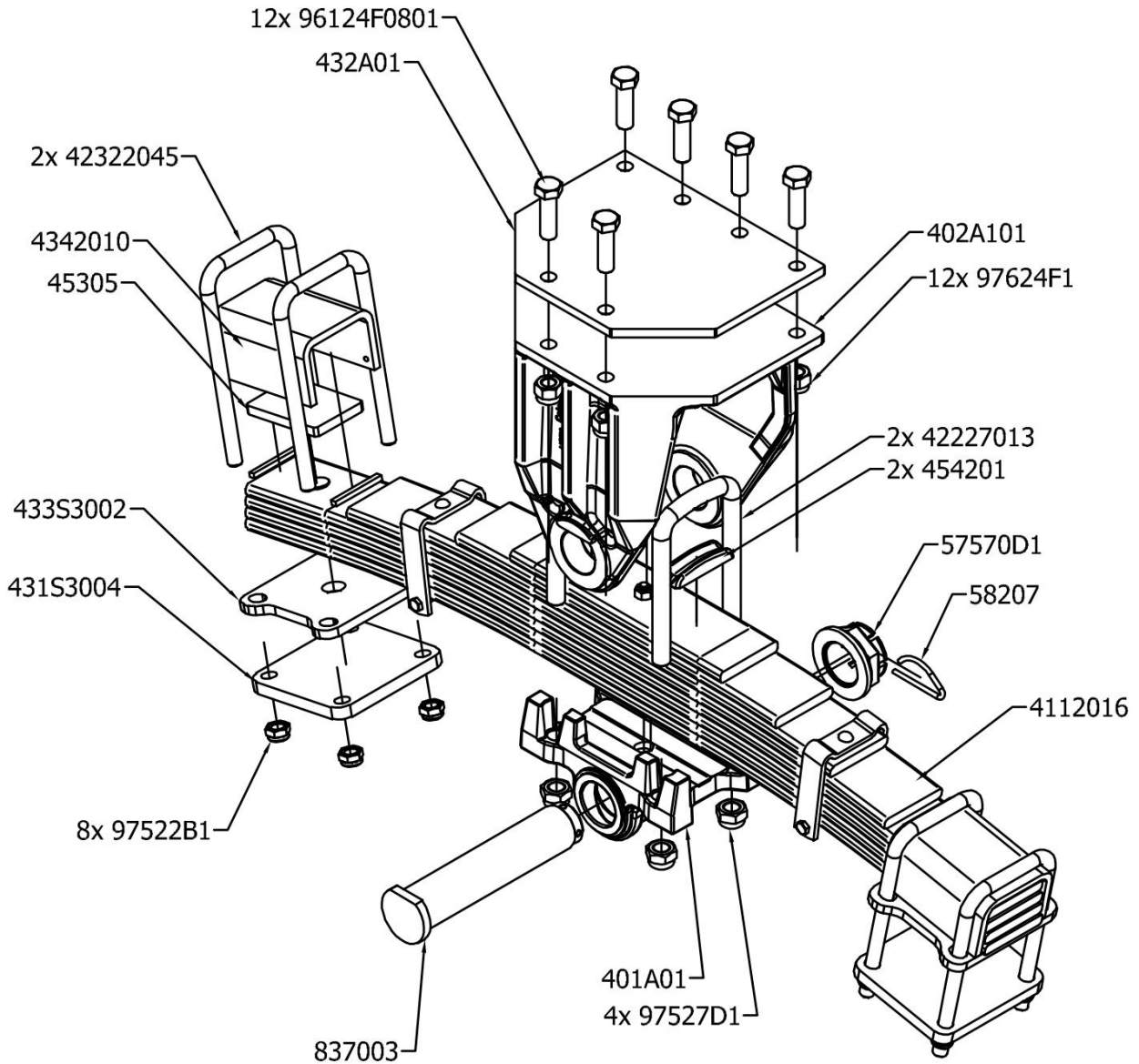


ADR 130mm Axle Brake Configuration

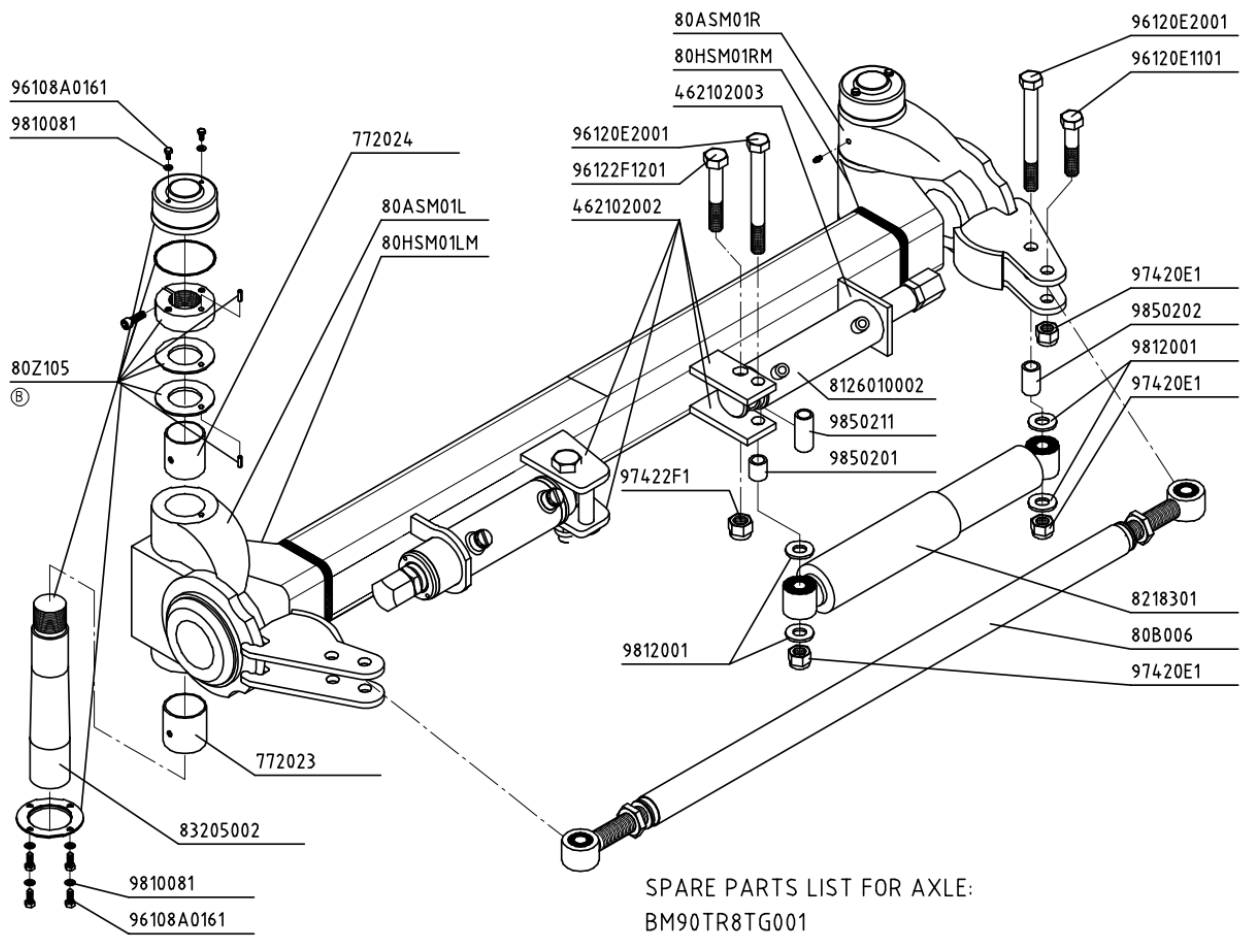
### ARD 1360 8 Leaf Bogie



### ARD 1500 9 Leaf Bogie



### ARD Steering Axle Assembly

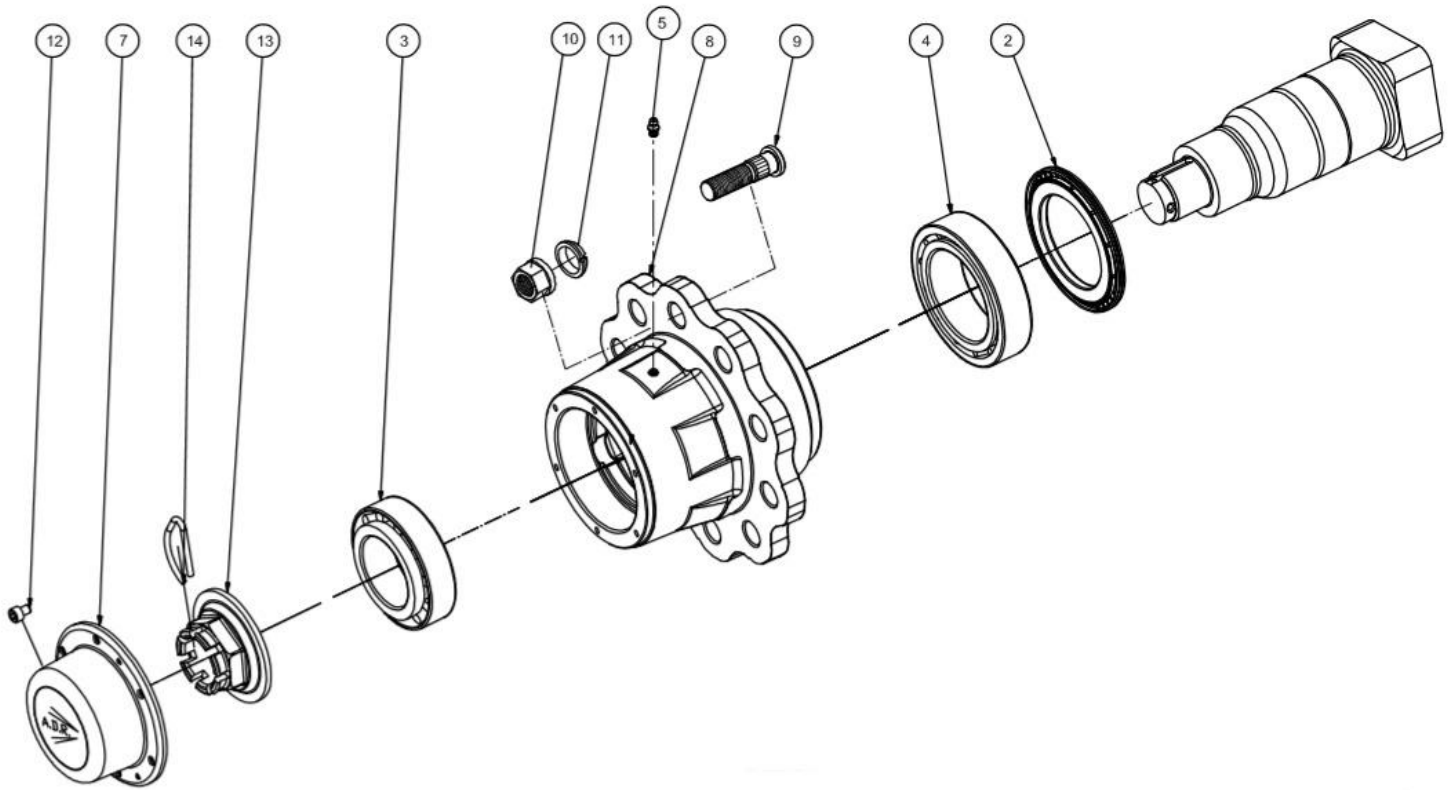


### Steering Axle parts list

| <b>BM90TR8TG001</b> |                                |                      |
|---------------------|--------------------------------|----------------------|
| <b>Component</b>    | <b>Description</b>             | <b>Link Quantity</b> |
| 96120E1101          | SCREW EH M20X2,50 L110 CA08,8  | 2                    |
| 96108A0161          | SCREW EH M08X1,25 L016 CR08,8  | 10                   |
| 9810081             | WASHER M08 D008,4 D016 TK1,6   | 10                   |
| 80Z105              | ASSEMBLY FOR RING-NUT SM       | 2                    |
| 98608A2             | GREASE NIPPLE 45° M08X1.25     | 4                    |
| 80B006              | COUPLING BAR L1890-2189        | 1                    |
| 8218301             | SHOCK ABSORBER D080 S241       | 1                    |
| 9.74E+05            | SELF LOCKING NUT M20X2.50 CA8  | 2                    |
| 9812001             | WASHER D020.5 D050 TK 4.0      | 4                    |
| 9850201             | SPACER D020.5/038 L032         | 1                    |
| 9850202             | SPACER D020.5/038 L045         | 1                    |
| 9850211             | SPACER D021/26.9 L060          | 1                    |
| 96120E2001          | SCREW EH M20X2,50 L200 CA08,8  | 2                    |
| 8126010002          | HYDR CYLINDER D060/040 S100    | 2                    |
| 97422F1             | SELF LOCKING NUT M22X2,50 CA8  | 2                    |
| 96122F1201          | SCREW EH M22X2,50 L120 CA08,8  | 2                    |
| 80ASM01R            | OUTER ARM RG COMPLETE 10 SM    | 1                    |
| 80ASM01L            | OUTER ARM LF COMPLETE 10 SM    | 1                    |
| 741TG9015           | BRAKE SUPPORT 408E S090        | 2                    |
| 7503552006          | CAM SHAFT D35 B0225 FLAT       | 2                    |
| 58513               | SEEGER D038 DIN471 FOR SHAFT   | 2                    |
| 58511               | SEEGER D032 DIN471 FOR SHAFT   | 2                    |
| 97124B1             | NUT M24X1.50 DIN 934           | 2                    |
| 53A08               | RUBBER CAP FOR CAM SHAFT Ø35   | 2                    |
| 9800241             | TWIN WASHER M24                | 2                    |
| 74402752            | SUPPORT STN B4SM 408E LEFT     | 1                    |
| 74402652            | SUPPORT STN B4SM 408E RIGHT    | 1                    |
| 468002              | ASSEMBLY SUPPORT PLATES        | 2                    |
| 80HSM01LM           | INNER ARM LF MACHINED SM 10    | 1                    |
| 80HSM01RM           | INNER ARM RG MACHINED SM 10    | 1                    |
| 59132213            | 32213 065 120 32.75            | 2                    |
| 59132216            | 32216 080 140 35.25            | 2                    |
| 57120B12            | STUD M20X1,50 L083             | 16                   |
| 61L8TD004           | HUB H08 20 120-140 220-275     | 2                    |
| 98608A1             | GREASENIPPLE STRAIGHT M08X1.25 | 2                    |
| 5471403             | GREASE SEAL INDUSTRIAL 082/140 | 2                    |
| 66LTG0801           | DRUM 400X080 H08 20 275-220    | 2                    |
| 731TG01             | BRAKE ASSEMBLY 400X080 408E    | 2                    |
| 56112518            | CAP 125 BOLT ON ADR            | 2                    |
| 57548B6             | CROWN NUT M48X1.50 WR65 H44    | 2                    |

| <b>BM90TR8TG001</b> |                               |                      |
|---------------------|-------------------------------|----------------------|
| <b>Component</b>    | <b>Description</b>            | <b>Link Quantity</b> |
| 58209               | SPRING PIN FOR NUT M48        | 2                    |
| 96308A0101          | SCREW SH M08X1,25 L010        | 12                   |
| 7611503             | LEVER 35 BNA FIXED            | 2                    |
| 462121002           | PLATE TK12 S235JR EN10025     | 2                    |
| 813104              | ASSEMBLY CYLIND D030/025 S110 | 2                    |
| 574201              | LIMES WASHER FOR M20          | 16                   |
| 57320B1             | STUD NUT M20X1.50 WR30        | 16                   |

**ADR 100mm**



| ITEM | CODE       | DESCRIPTION                      |
|------|------------|----------------------------------|
| 14   | 58209      | SPRING PIN                       |
| 13   | 57548B6    | CROWN NUT                        |
| 12   | 96308A0101 | SOCKET HEAD SCREW                |
| 11   | 574221     | LIMES                            |
| 10   | 57322B1    | STUD NUT                         |
| 9    | 57122B2    | STUD M22                         |
| 8    | 61L1UA004  | HUB 10 HOLES                     |
| 7    | 56112518   | CAP WITH GASKET                  |
| 5    | 98608A1    | GREASE NIPPLE                    |
| 4    | 59133018   | FRONT TAPER ROLLER BEARING 33018 |
| 3    | 59133114   | REAR TAPER ROLLER BEARING 33114  |
| 2    | 5471404    | GREASE SEAL                      |